



**FENSTAL®**

*World Class Aluminium*



**ROBUST  
VERSATILE  
DURABLE**

WORLD CLASS ALUMINIUM





- **Attractive design.**

System especially excel in full filling the design requirement of outward. Opening windows by showcasing a particularly slim profile.

- **Exceptional material Stability.**

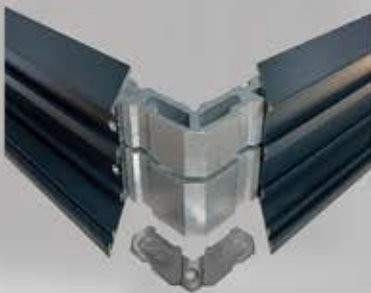
Multi chamber design with thichness  $1,7 \div 2,5$  mm.

- **Reduce noise and water tightness.**

Equipped with double with durable epdm material

## Main Performance

### Special Joining



### Crimping

The latest connection process used in Germany or Europe to combine aluminium profile to make theme stonger, neater and more durable.

By placing some kind of aluminium joint/corner pack (consisting of corner cleat and chevron) in the aluminium profile.

Using a crimping machine to tear the surface of the aluminum profile so that it penetrates until the corners of the pack joint together.



## Gluing

Inserting special glue to fill the empty cavities, so that there is no possibility for the profile and corner pack to move, as result the connection will be stronger and more durable



## Multipoint Locking

Difficult to Dismantle From Vertical And Horizontal Directions.



## Night Vent Locking

Introducing “night vent” locking system, this extra. Features allows you to lock the window in a slightly open position, so that air circulation remain and security still maintained

## Basic Performance



Noise Insulation



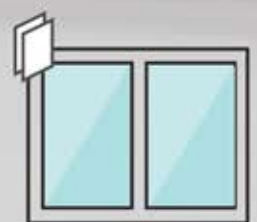
Resistance to Wind Load



Water Tightness



Thermal Insulation



Double Glazing

# Greatest Variety of Beautiful Windows Design.



Sliding Windows and Doors



Folding Door



Tilt and Turn Windows



French Door



Curve Windows



Swing Windows



Side Hung Windows



Top Hung Windows

Aluminium from FENSTAL are built according to a carefully designed profile concept. This concept allows for many different windows design, with the greatest variety. With FENSTAL, you can implement your very own personal style - windows of all shapes and design : rectangular, polygonal, round or extra large units. When it comes to making your ideas reality, FENSTAL windows system give you virtual unlimited freedom.



**FACTORY/OFFICE**  
PT. DINAMIKA UNGGUL PERKASA

Kawasan Industri Kalisabi  
Jl. Kalisabi No.8 Gatot Subroto Km 3,5  
Tangerang - 15138  
Indonesia  
Phone : +62 21 5526203 / 5526204  
Email : [marketing@fenstal.co.id](mailto:marketing@fenstal.co.id)  
Instagram : [@fega\\_fesia\\_fenstal](https://www.instagram.com/fega_fesia_fenstal)

**CUSTOMER CARE**  
0812-1081-0910

**SHOWROOM**



TANGERANG  
Jl. Ruko Jalur Sutera 16A No.6  
Alam Sutera



Or code for Website